

# APPLICATION REFERENCE: TPO/22/0997

LOCATION: Land rear of The Poplars Cromer  
PROPOSAL:  
To Confirm a Tree Preservation Order to protect  
amenity.



NORTH  
NORFOLK  
DISTRICT  
COUNCIL

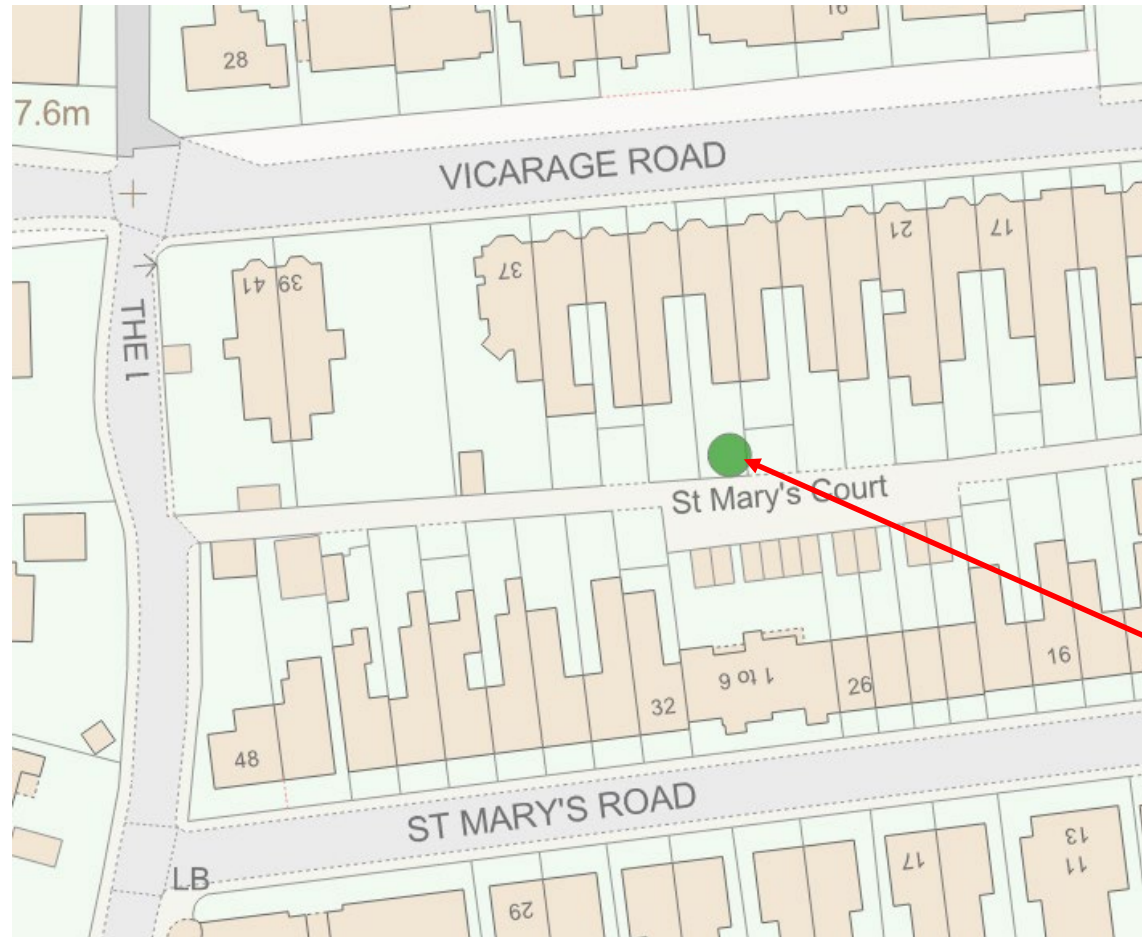
[north-norfolk.gov.uk](http://north-norfolk.gov.uk)

2023

# SITE LOCATION PLAN



Cromer town, tree is located south of the main shopping area



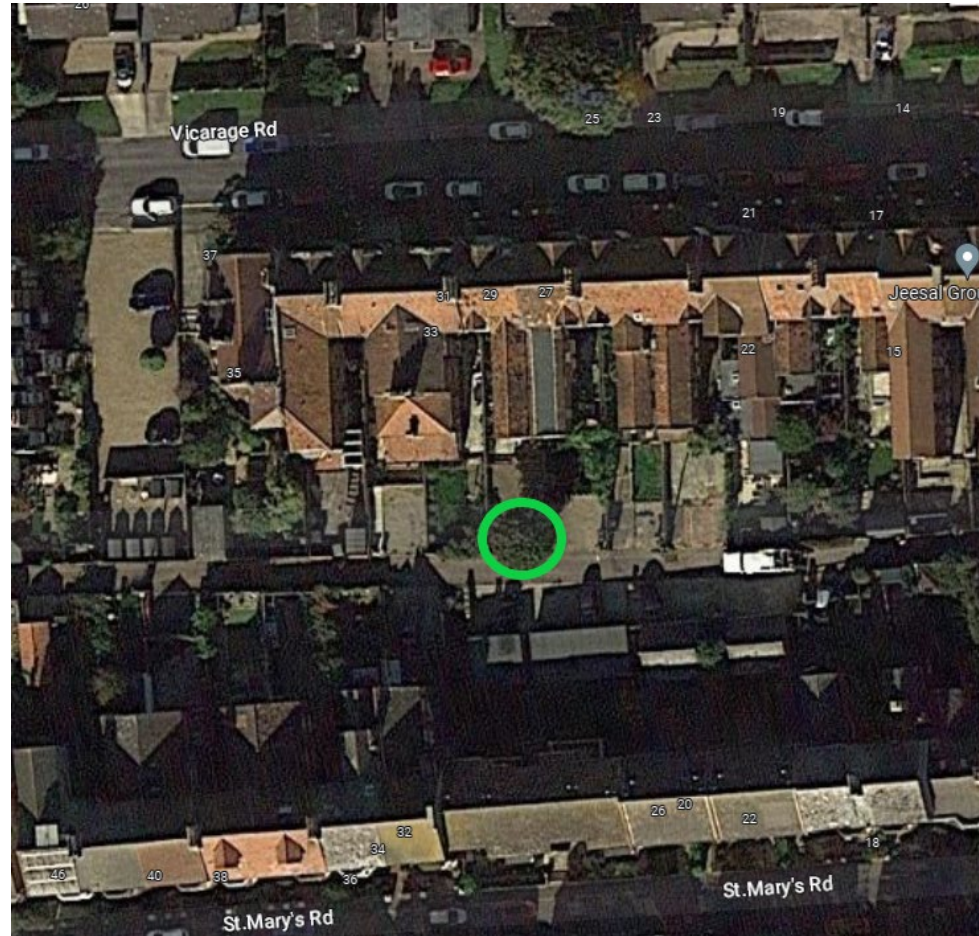
TPO location



# AERIAL PHOTOGRAPHS



Aerial map of Cromer Google



# SITE PHOTOS



← View from The Loke towards St Mary's Court

View of entrance to rear garden / parking area →





# SITE PHOTOS



← Image of tree, close to wall

Close up of roots  
and stem →



# SITE PHOTOS



Image supplied by residents showing parking constraint



Garden layouts at the rear of Vicarage Rd



# KEY ISSUES

- The Order will protect the lime tree
- Retaining and protecting the tree conserves the character and appearance of the area
- The tree continues to contribute positively to the area, the amenity and biodiversity are important to retain

# RECOMMENDATION

**Confirm the Tree Preservation Order to protect one lime tree**