

APPLICATION REFERENCE: PF/22/2510

LOCATION: Happisburgh Beach Car Park,  
Beach Road, Happisburgh

PROPOSAL:



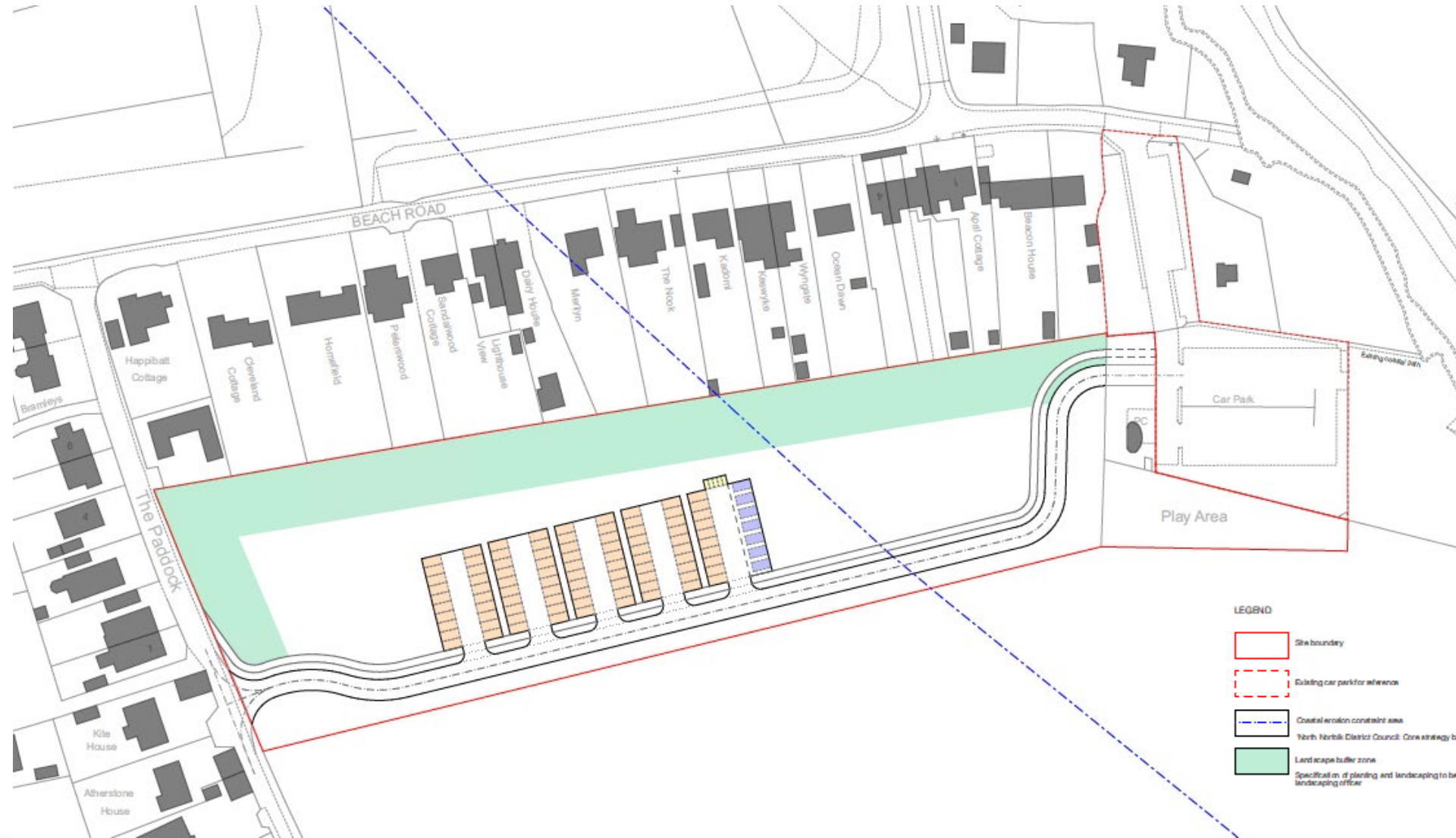
NORTH  
NORFOLK  
DISTRICT  
COUNCIL

[north-norfolk.gov.uk](http://north-norfolk.gov.uk)

# Site Location Plan






# Proposed car park layout



## LEGEND

-  Site boundary
-  Existing car park reference
-  Coastal erosion constraint area
-  North Norfolk District Council Core Strategy boundary plan 2009
-  Landscape buffer zone  
Specified on plan and landscaping to be agreed with council landscaping officer

-  Parking bay - 90 spaces  
2000 x 5000mm high frequency parking dimension in accordance with Norfolk Parking Standards 2007
-  Accessible parking bay - 7 spaces based on 6:100 ratio  
3000 x 6000mm in accordance with BS 6300-1:2016, including international symbol for access BS 6300-2:2016 - fig 9
-  PTW bay - 5 spaces based on 1:20 ratio  
1200 x 2000mm in accordance with Norfolk Parking Standards 2007. Sheffield stand with a low bracing bar used at rear of space.



# 2014 aerial image





# 2017 aerial image





# 2020 aerial image





# 2023 aerial image





# Close-up aerial image





# Key elements of the proposal:

- Provision of new access drive to keep the existing car park open,
- delivery of new spaces only when the existing car park is unsafe,
- ecological enhancements and landscaping to the north and west,
- grasscrete surface to be used throughout,
- proposal is supported by the Council's coastal erosion rollback policies, and ongoing access to the Deep History Coast, Norfolk Coast Footpath, Happisburgh Lighthouse, and a nationally important geography case study is maintained.

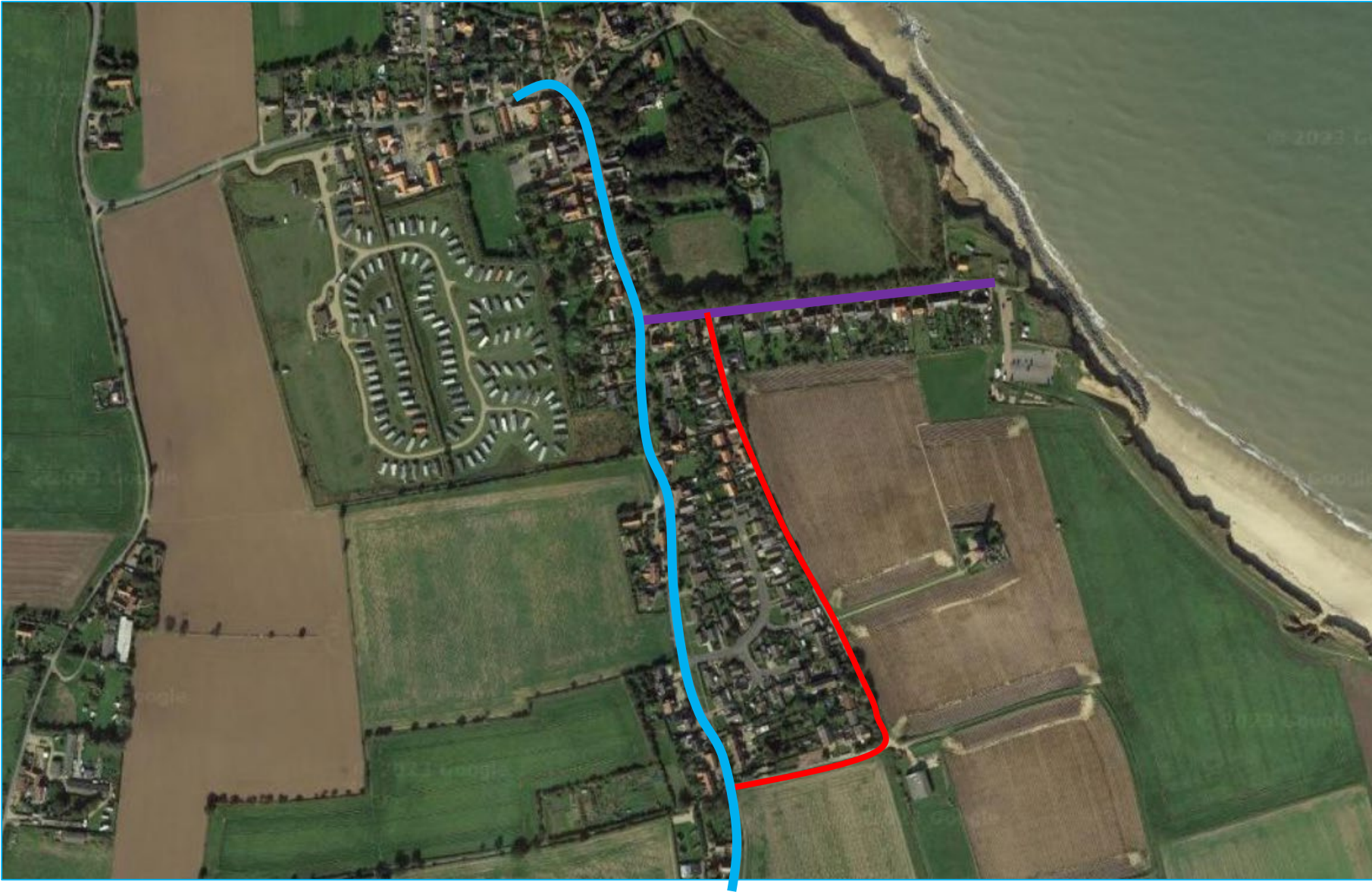
# Highway Network

Key:

Lighthouse Lane

Whimpwell Street

Beach Road





# Beach Road / Whimpwell Street





# Beach Road / Whimpwell Street



From Whimpwell Street – Looking north (L) Looking south (R)



# Beach Road / Lighthouse Lane



From Lighthouse Lane – Looking west (L) Looking east (R)



# Beach Road / Lighthouse Lane



From Beach Road – Looking west (L) Looking east (R)



# Lighthouse Lane / Whimpwell Street



From Whimpwell Street – Looking south (L) Looking north (R)



# Lighthouse Lane / Whimpwell Street



From Lighthouse Lane – Looking north (L) Looking south (R)



# Beach Road Existing Standard





# Beach Road Existing Standard





# Beach Road Existing Standard





# Lighthouse Lane Standard





# Lighthouse Lane Standard



Approximate access location opposite this barn



# Lighthouse Lane Standard





# Lighthouse Lane Standard





# Lighthouse Lane Standard





# Lighthouse Lane Standard





# Lighthouse Lane Standard





# Access point into existing car park





# Existing car park facilities





# Existing car park facilities



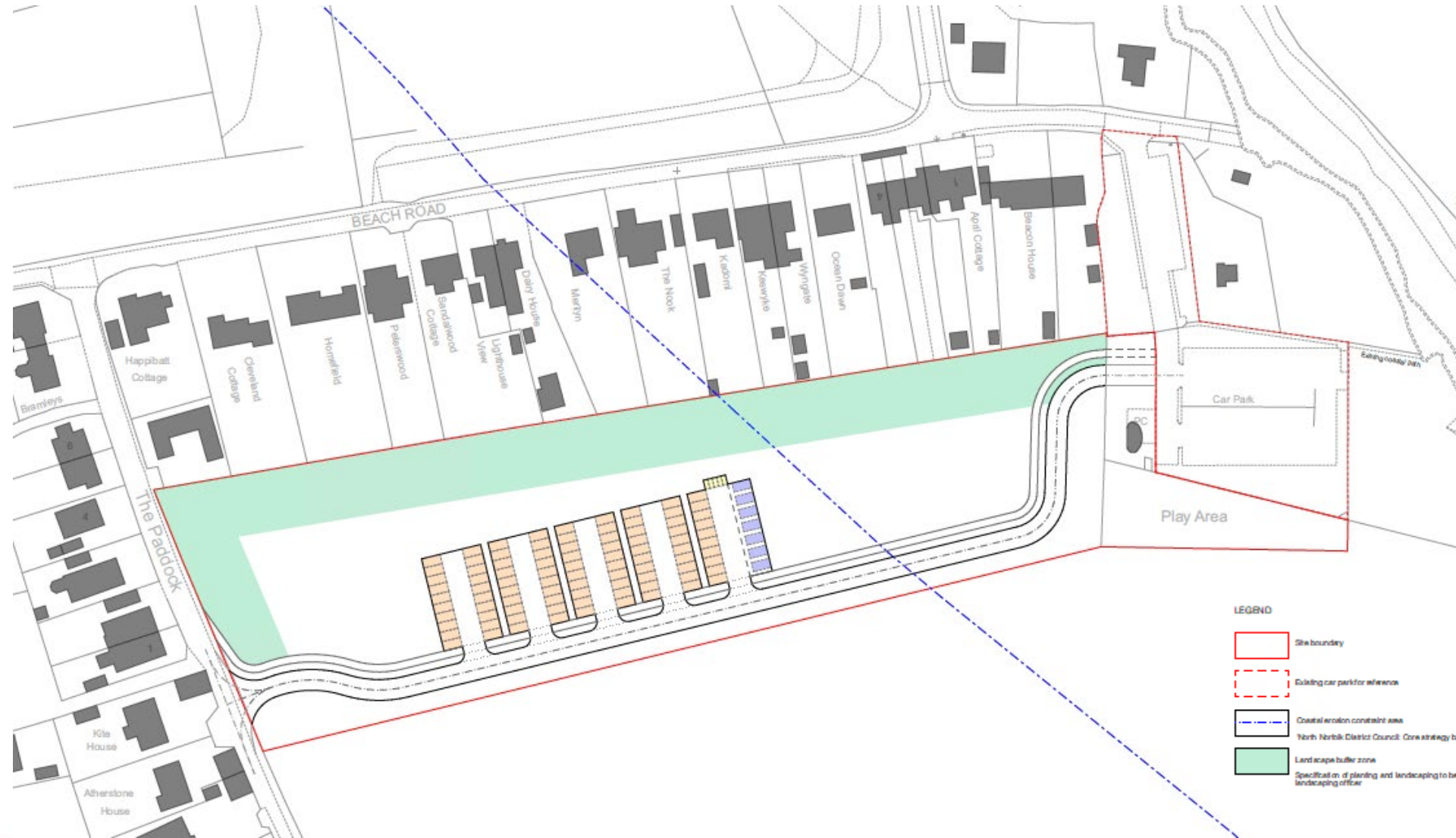


# Site of proposal from Lighthouse Lane





# Proposed car park layout



## LEGEND

- Site boundary
- Existing car park for reference
- Coastal erosion constraint area
- North Norfolk District Council Core strategy boundary plan 2007
- Landscape buffer zone  
Specified on plan and landscaping to be agreed with council landscaping officer

- Parking bay - 90 spaces  
2000 x 5000mm high frequency parking dimension in accordance with Norfolk Parking Standards 2007
- Accessible parking bay - 7 spaces based on 6:100 ratio  
3000 x 6000mm in accordance with BS 6300-1:2016, including international symbol for access BS 6300-2:2016 - fig 9
- PTW bay - 5 spaces based on 1:20 ratio  
1200 x 2000mm in accordance with Norfolk Parking Standards 2007. Sheffield stand with a low bracing bar used at rear of space.



# Recommendation

**APPROVAL subject to conditions to cover the matters listed below (and any others subsequently considered necessary by the Assistant Director – Planning):**

1. Time Limit
2. Approved plans (including design of bell-mouth to car park)
3. Surface materials
4. Compliance with the drainage strategy
5. Use prohibition for the new parking space until such a time as they are necessary
6. Closure of the existing access point as soon as the new access is in use
7. Number of spaces not to exceed 74 as per the plan at any time
8. Car park opening hours with access gate to be closed when car park is not in use
9. Prohibition of overnight camping
10. Implementation of ecological mitigation and enhancement measures
11. Provision of a mixed species native hedgerow with trees every 10m to the southern boundary of the site
12. External lighting
13. Any other highway conditions

**Final wording of conditions to be delegated to the Assistant Director – Planning**