

# APPLICATION REFERENCE: PF/23/1150

The Ship Inn, Mundesley

Erection of 2no. gazebos (with festoon and LED flood lights) to provide covered seating areas and relocation of existing flue on front roof slope of roadside building to rear roof slope (part retrospective)



NORTH  
NORFOLK  
DISTRICT  
COUNCIL

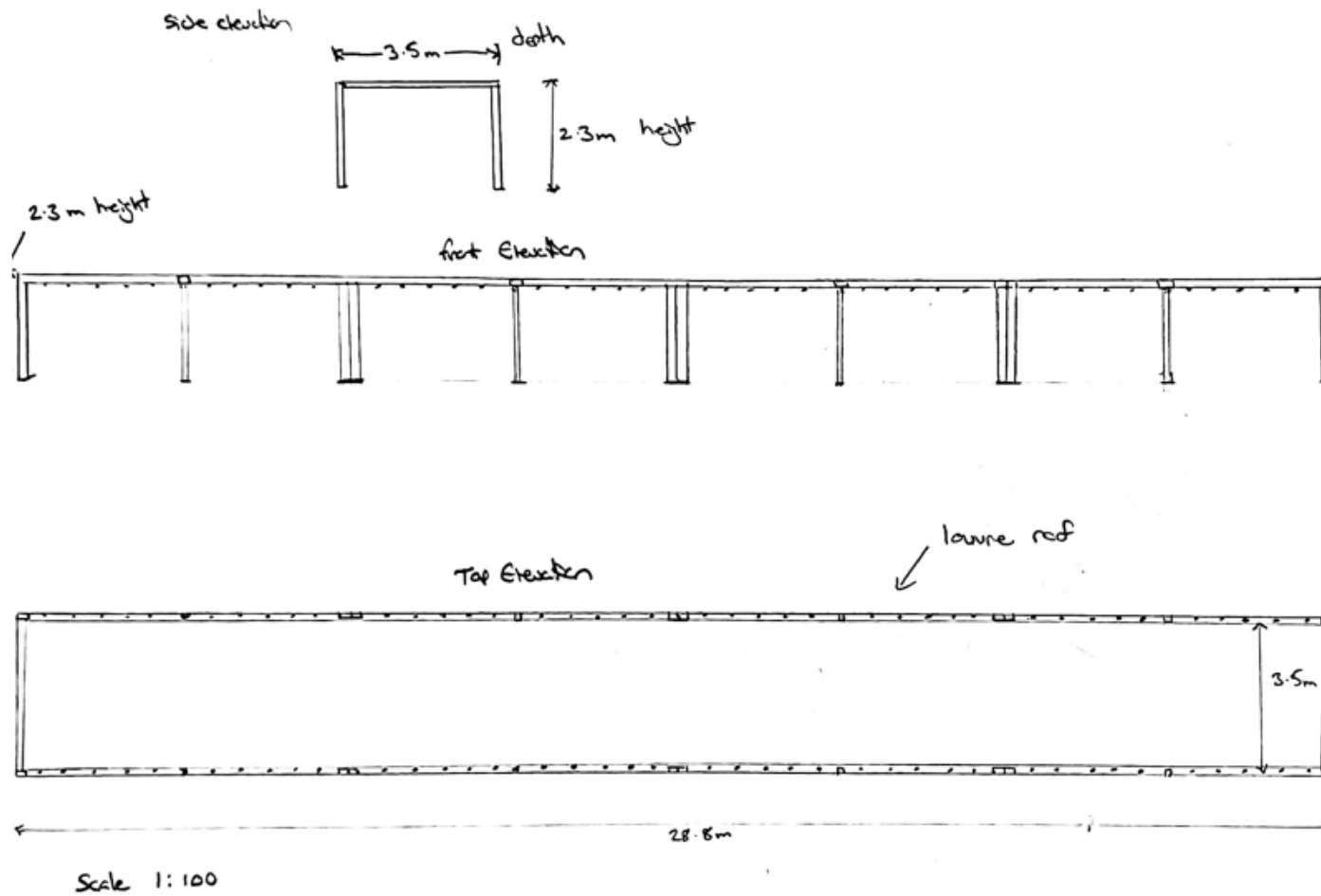
[north-norfolk.gov.uk](http://north-norfolk.gov.uk)

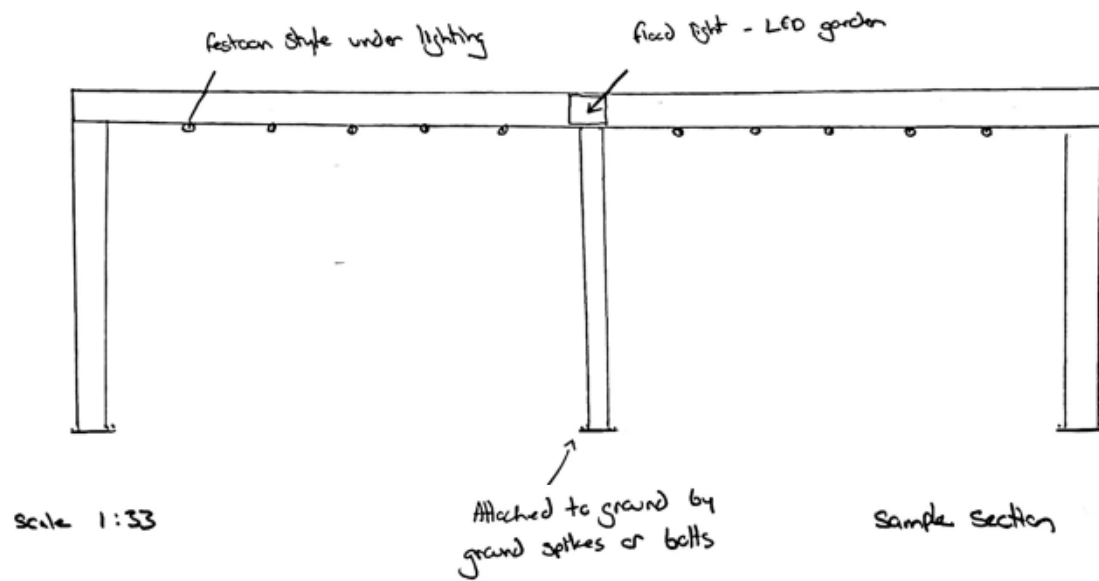




















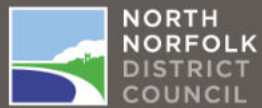




# BEER GARDEN GAZEBO

## View from the promenade





NORTH  
NORFOLK  
DISTRICT  
COUNCIL

# BEER GARDEN GAZEBO

View from neighbour gardens to the east

[north-norfolk.gov.uk](http://north-norfolk.gov.uk)





# THE DRAINAGE SYSTEM

Another clever part of this gazebo is the drainage system. When the shuttered roof is completely closed, water will run into the drainage channels housed within the shuttered roof sections and then continue to run down inside the legs, finally exiting out of the bottom into the anchored surface.

The drainage channels are cleverly designed for discreet disposing of excess rain water.



## TECHNICAL DATA SHEET

### Hydrocell Data Sheet

Hydrocell systems are used in stormwater retention, attenuation or infiltration applications. The Hydrocell crate has been designed for use in deep applications, subject to regular and heavy traffic loadings, e.g cars and HGV's. It also offers usage in both landscaped and deep soakaway applications. The crates are designed to be simply and easily stacked together to create an attenuation system: when the normal drainage systems cannot cope with the volume of surface water, this is diverted into the Hydrocell storage system and released slowly after the storm has passed avoiding localised flooding. When creating a soakaway, these underground storage units are wrapped in a heavy-duty non-woven needle punched geotextile to allow water discharge to the subsurface, but prevent any soil or sand particles to go through.

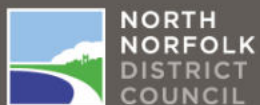
#### Physical Properties

Dimensions	1000mm x 500mm x 400mm
Volume	0.2m <sup>3</sup>
Storage Volume	190 Litres (0.19 <sup>3</sup> )
Void Ratio	95%
Unit Weight	10kg
Material	Polypropylene
Short term compressive strength	
Vertical	Maximum 620kn/m <sup>2</sup>
Lateral	Maximum 60kn/m <sup>2</sup>



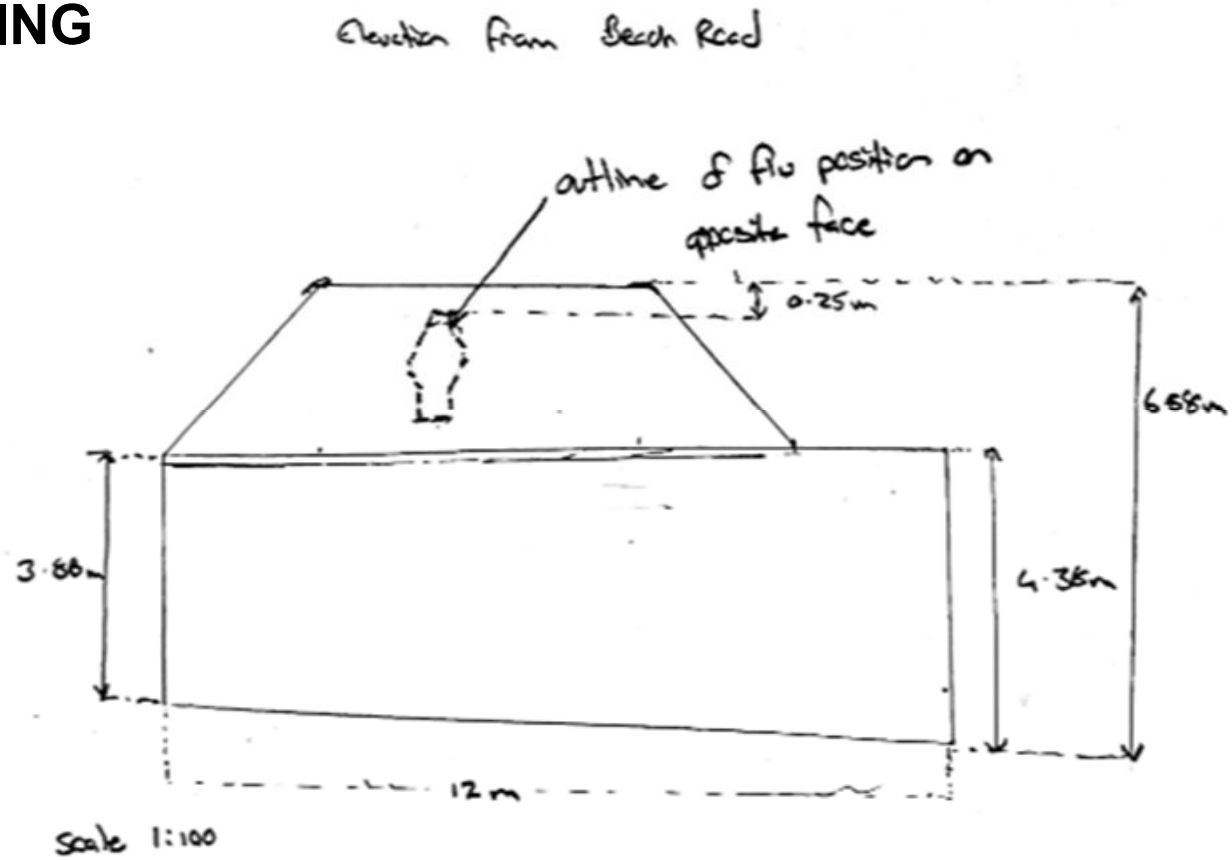
#### Key Benefits

- Load bearing strength of 62 tonnes per m<sup>2</sup>
- 95% void ratio
- Ideal for retention, attenuation, or infiltration applications with a suitable geomembrane or geotextile
- Designed for use in deep applications, subject to regular and heavy traffic loadings
- Integrated inlet and outlet
- 100% Recyclable



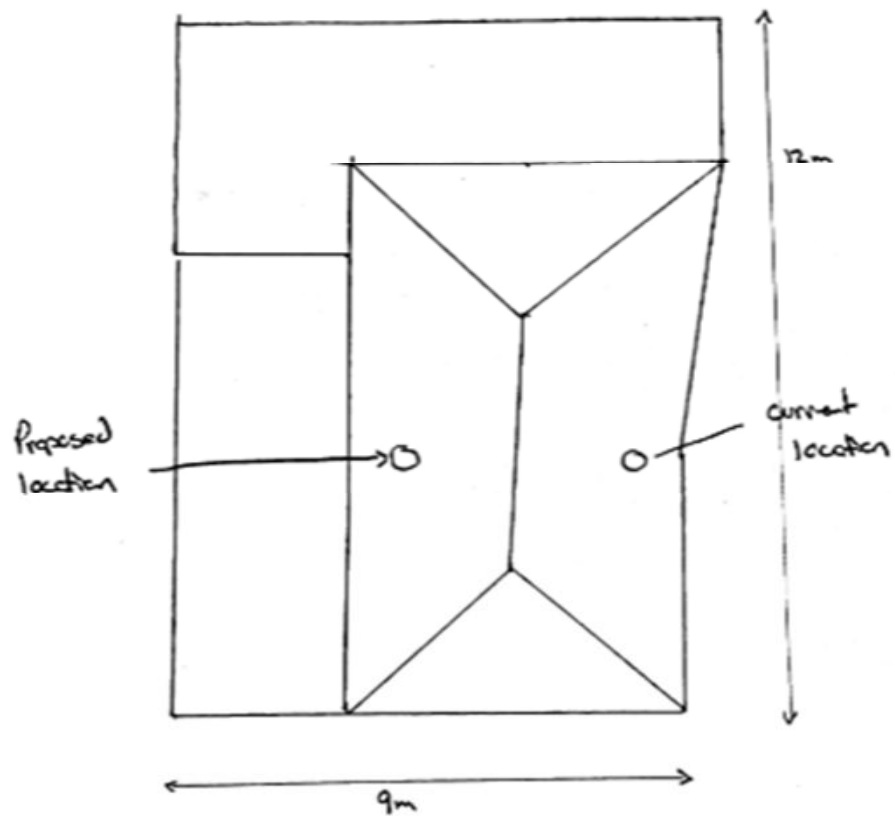
# SOAKAWAY SYSTEM FOR GAZEBOS

# EXISTING



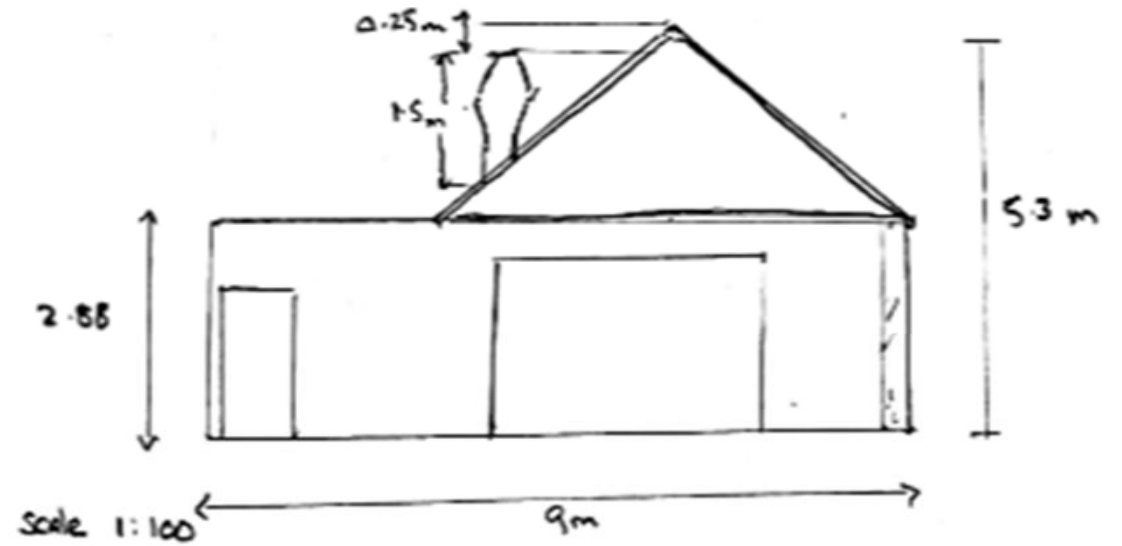


Top Elevation



## PROPOSED

Front Elevation



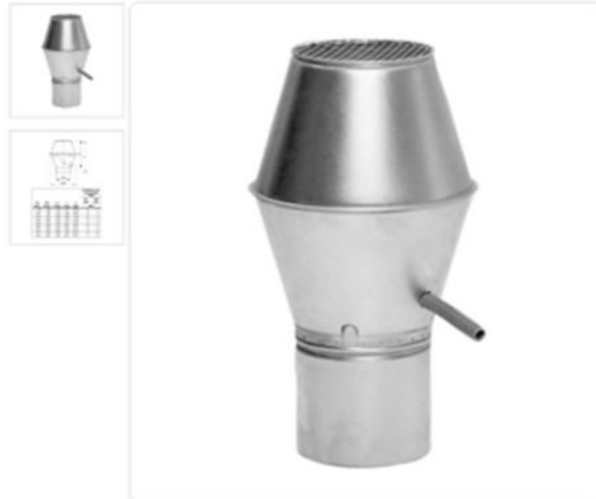
[Top](#) » [Ducting - Metal](#)

## Galvanised Jet Cowl - 560mm

Model: GALHN560

Search: QS8630

★★★★★ | [Be the first to Write a Review](#)



Availability: up to 21 Days

Non-returnable

### TECHNICAL

#### Technical Specifications

Product Category	Roof Cowls
Round System (mm)	560
Product Type	Roof Cowl
Product Group	Metal Ducting
Material	Galvanised Steel
Temp Max (°C)	250
Economy Delivery	Not Eligible
Next Day Delivery	Not Eligible
Manufacturer Product Code	854860
Quick Search:	QS8630

### FEATURES

#### Features

Ventilation hood for air exit above roof, suitable for both industrial and comfort ventilation.

Air is ejected in an upwards jet to avoid contaminating the air in the vicinity of the hood.

Ejection is so effective that you can install a fresh air inlet in the immediate vicinity of the hood

Contains internal rain funnel to collect rain and snow; drained out of the hood through a hose.

Our fittings are produced in accordance with DW144, and have a rolled edge for safer handling and improved alignment.



# EXTRACTOR FLUE

## View from the road





# EXTRACTOR FLUE Proposed location





# Key Issues

- Principle of development
- The effect on the character and appearance of the area
- The effect on residential amenity
- Coast erosion
- Highways safety



# Recommendation

## **Approval**, subject to conditions

- Plans
- LED floodlight and cowling details
- Operating hours restriction for the lights
- Details of kitchen extractor and flue
- Time limit for installation of the gazebo soakaways