

APPLICATION REFERENCE: TPO/23/1016

LOCATION: Land At Oak Wood, 3 Harp Close,
Holly House and Garden House, Wells Road
Fakenham

PROPOSAL:

To Confirm a Group of 9 pine trees, Tree
Preservation Order to protect amenity.

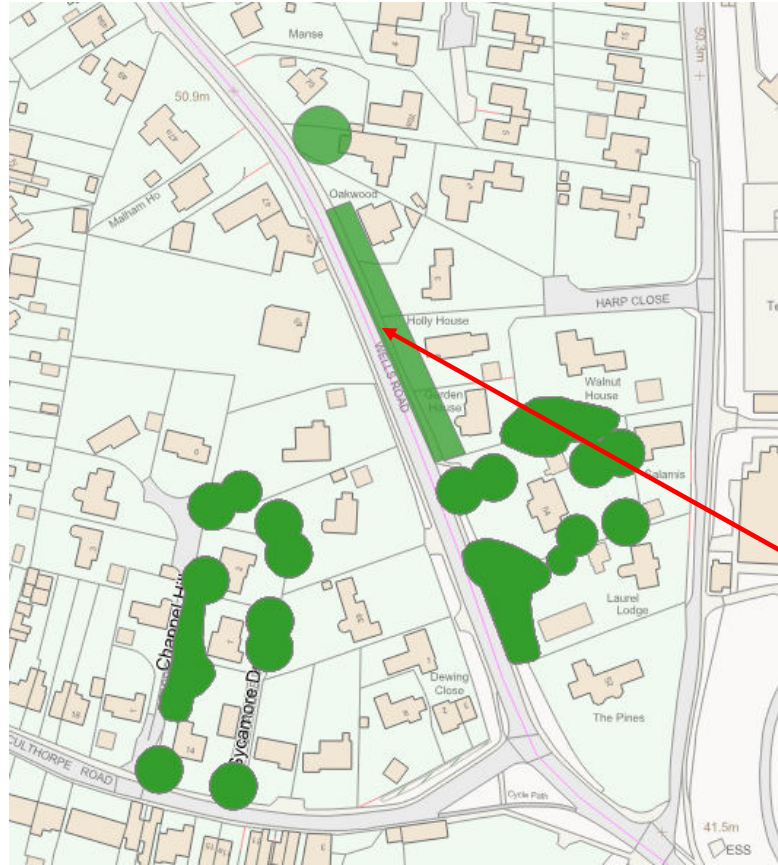
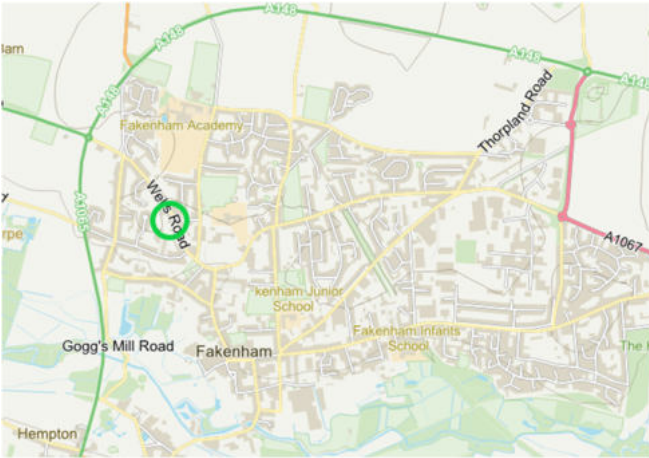


NORTH
NORFOLK
DISTRICT
COUNCIL

north-norfolk.gov.uk

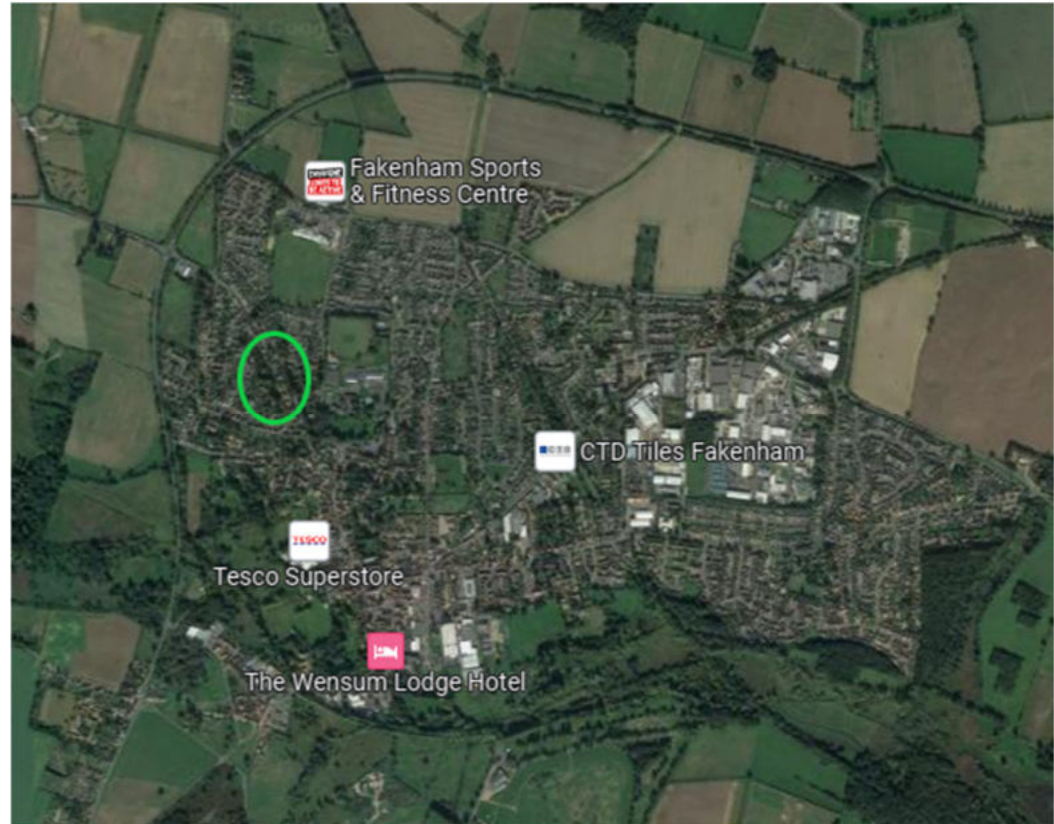
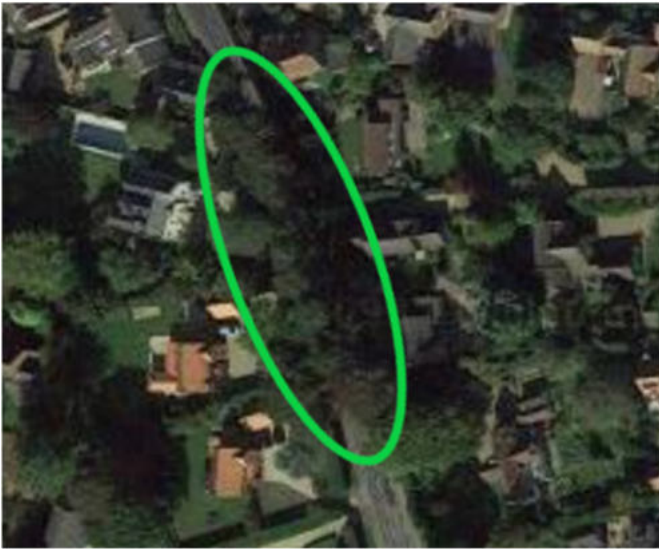
2023

SITE LOCATION PLAN

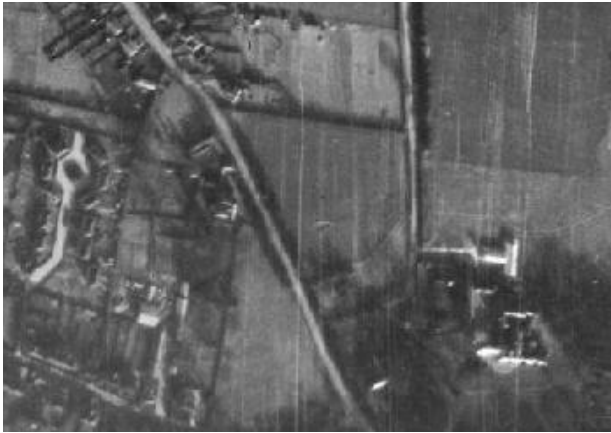


Provisional TPO area
in dark green

AERIAL PHOTOGRAPHS



AERIAL PHOTOGRAPHS



1946-60 RAF map

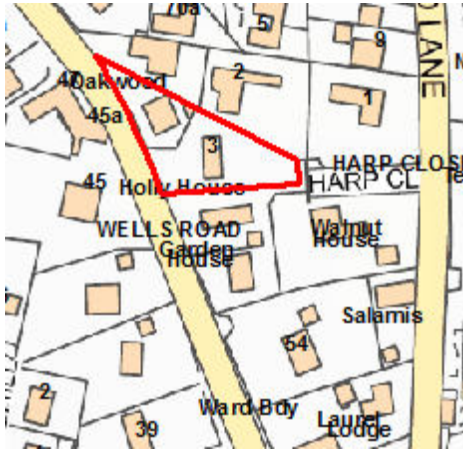


1988 aerial map

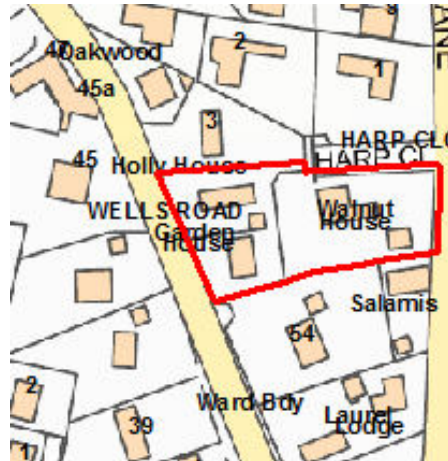


2010 aerial map

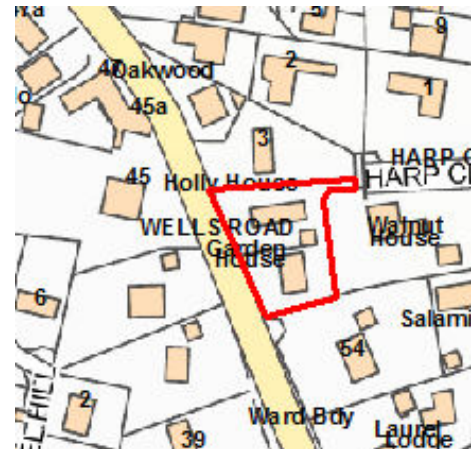
SITE PLANNING HISTORY



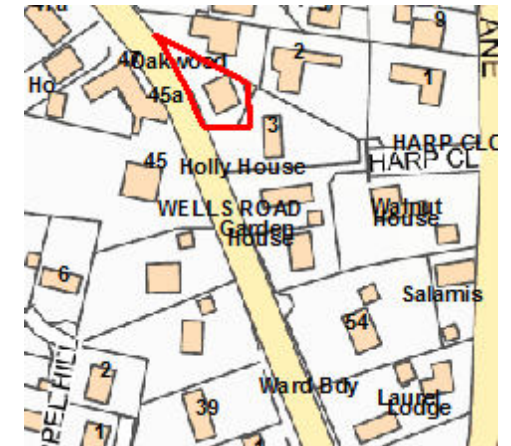
1978 Plot off Field Lane (3 Harp Close)



1986 Land at Harp Close (Now Walnut House)



1994 Land at Harp Drive (now Garden House and Holly House)



2004 Land at Harp Close (now Oakwood)

SITE PHOTOS



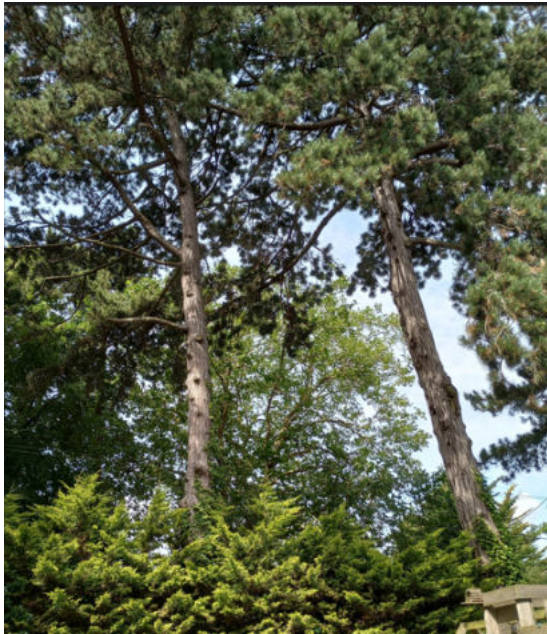
Wells Road, proximity to dwelling 'Oakwood'



Wells Road, looking north



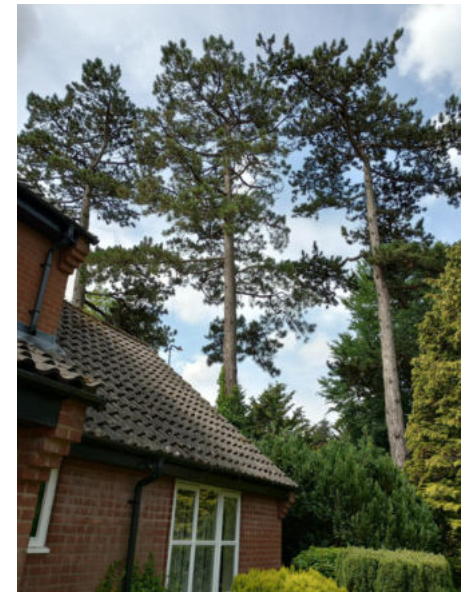
SITE PHOTOS



Garden House, rear garden



Holly House



SITE PHOTOS



Wells Road, Oakwood



SITE PHOTOS



1st Garden



2nd Garden



3rd Garden



4th Garden

KEY ISSUES

- The group of pine trees form a considerable visual amenity, prominent in the street scene
- The trees are close to dwellings and in falling distance of Wells Road
- Long term management can include planting replacement trees now to plan long term canopy cover
- Amenity, biodiversity and connectivity of the area is can be retained and the trees properly considered as part of any future tree work requirements

RECOMMENDATION

**Confirm Tree Preservation Order - NNDC TPO (FAKENHAM) 2023
No.15**

To protect group of 9 Corsican pine trees