

APPLICATION REFERENCE: RV/23/2222

LOCATION: Land to the east of The Reef
Leisure Centre, Weybourne Road, Sheringham

PROPOSAL: Variation of condition 3 and
removal of conditions 5, 6 and 7 of planning
permissions PF/22/1660

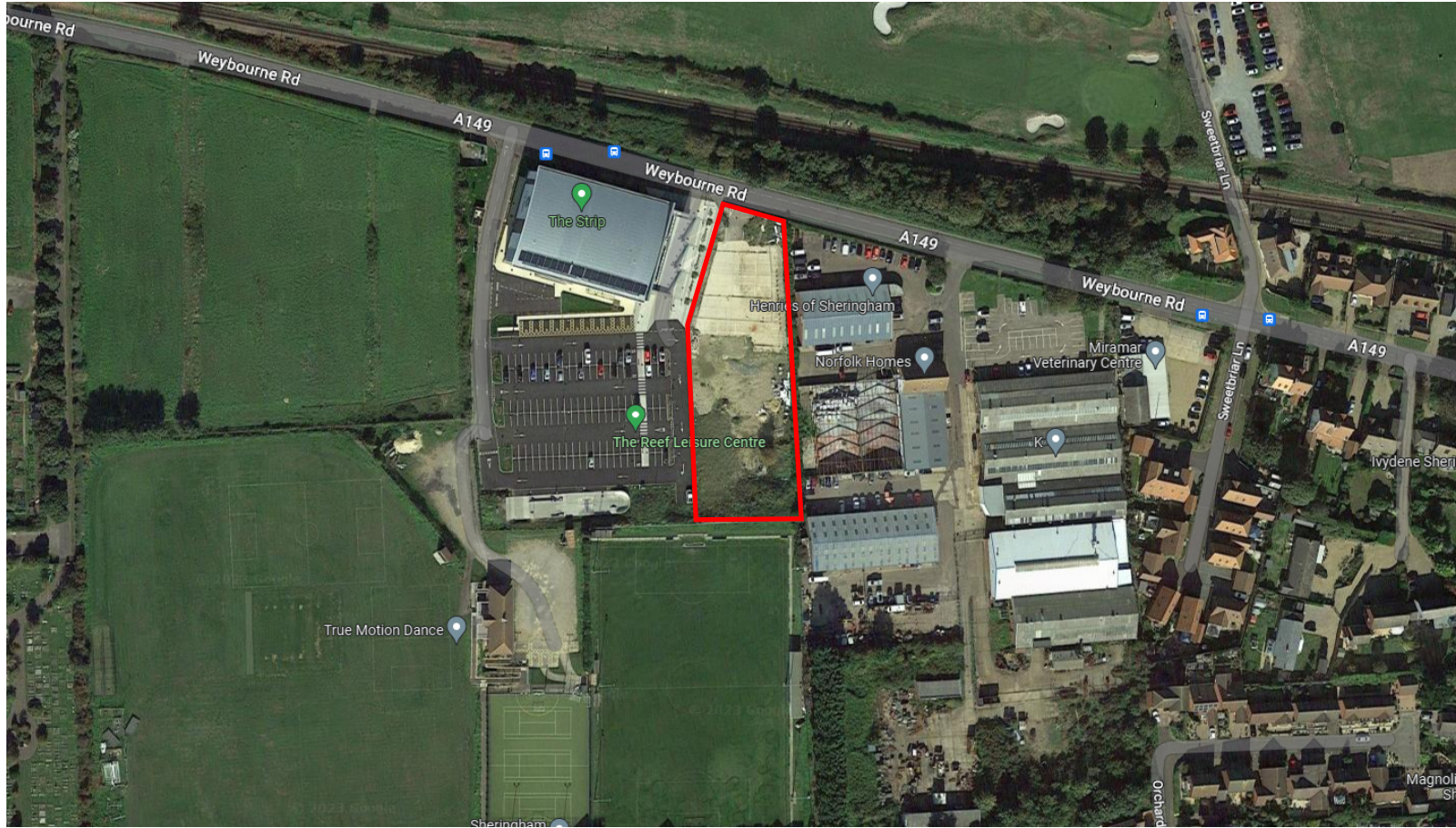


NORTH
NORFOLK
DISTRICT
COUNCIL

north-norfolk.gov.uk

11/01/2024

SITE LOCATION PLAN



From A149 to the West of Site



From A149 to Site Frontage



From A149 to East of Site



From Southern Boundary of the Site



Approximate point for new access

From Residential Area to the South of Sheringham FC



Approximate location of photo

Key Provisions of the Development

- 3/4 storeys in height
- 37 suites comprising:
 - 10 no. one bed studios
 - 18 no. one bedroom suites
 - 6 no. two bedroom suites
 - 3 no. accessible suites located at ground, first and second floor level
- 49 total car parking spaces:
 - 7 EV
 - 2 EV and disability accessible
 - 1 disability accessible
- Motorcycle and bicycle parking provision
- Art-deco styling of the building
- Hard and soft landscaping across the site

Recommendation

That conditions on the on the decision are VARIED with NONE REMOVED. Key changes recommended outlined below:

- Condition 3 – Allow for variation of the condition that enables a hotel use, rather than an exclusively ‘tourist’ or ‘holiday’ use.
- Condition 5 – Do not vary at all.
- Condition 6 – Allow for increase in let length to 56 days.
- Condition 7 – Allow for an increase in amount of time an individual can let any of the units to 56 days.