

APPLICATION REFERENCE: PF/24/1500

LOCATION: 20 Bernard Road, Cromer

PROPOSAL: Installation of air source  
heat pump

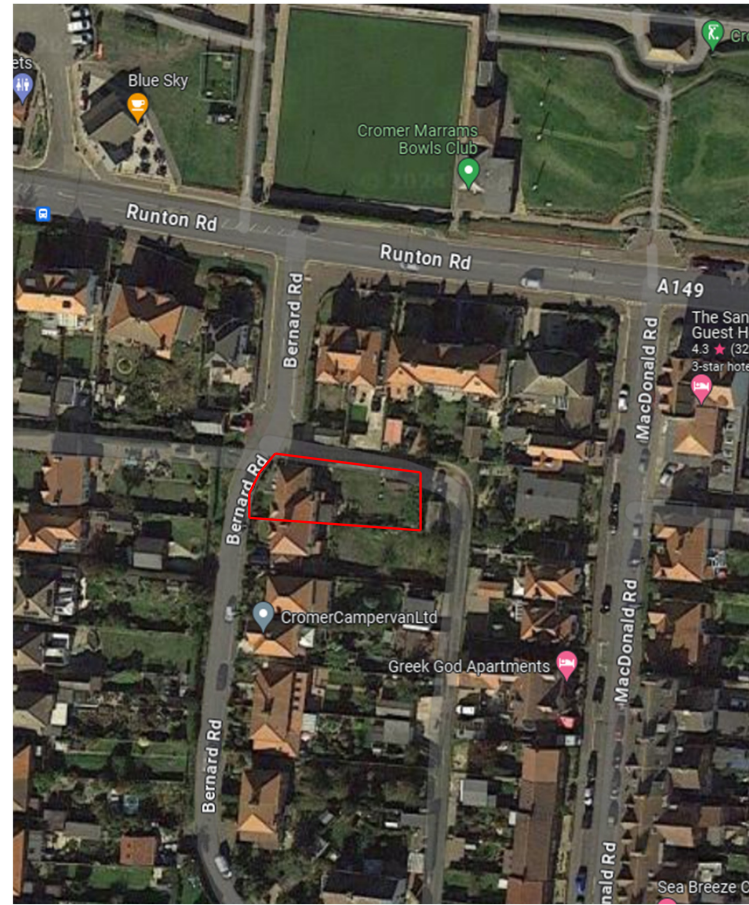
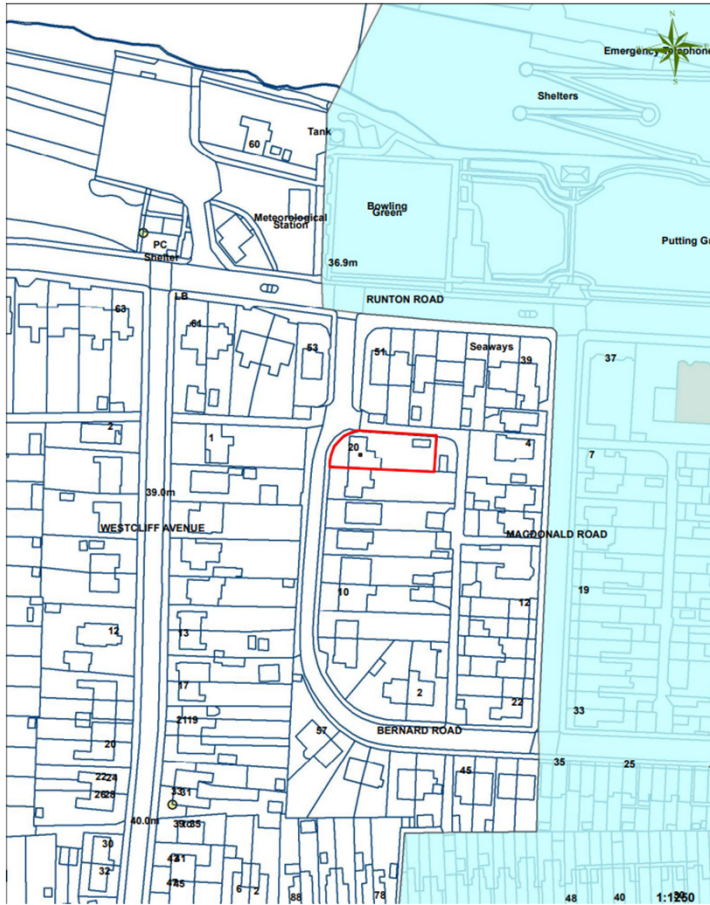


NORTH  
NORFOLK  
DISTRICT  
COUNCIL

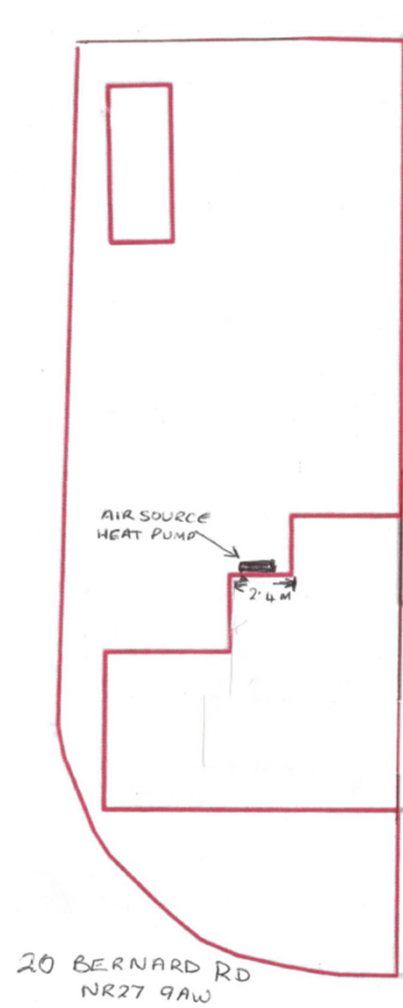
[north-norfolk.gov.uk](http://north-norfolk.gov.uk)

22<sup>nd</sup> August 2024

# SITE LOCATION PLAN

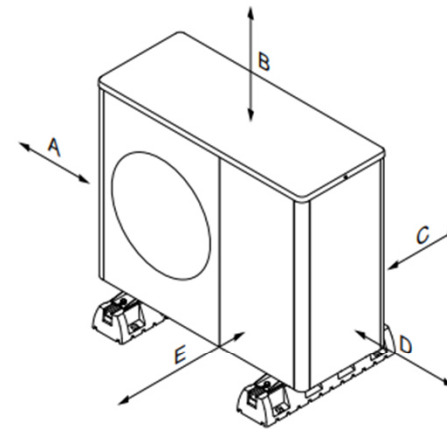
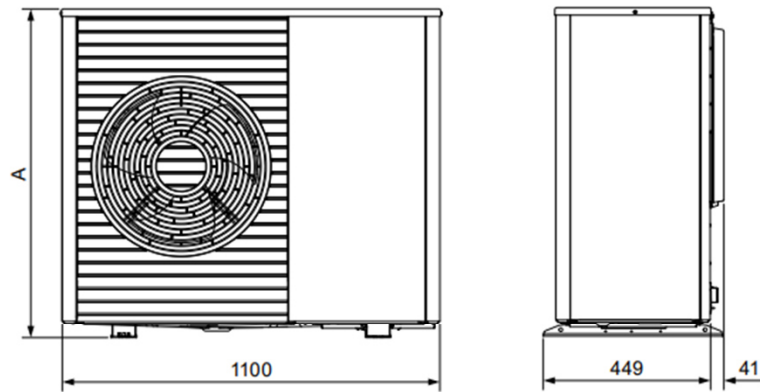


# PROPOSED SITE PLAN



# ASHP Dimensions

## Dimensions and clearances



aroTHERM plus	Unit	Dimension A
3.5kW	mm	765
5kW	mm	765
7kW	mm	965
10kW	mm	1565
12kW	mm	1565

Minimum clearance	Unit	Heating mode	Heating and cooling mode
A	mm	100	100
B	mm	1000	1000
C	mm	200	250
D	mm	500	500
E	mm	600	600



# APPROX. LOCATION OF ASHP ON REAR ELEVATION



# KEY ISSUES

- Principle of development
- Impact on character of the area and design
- Impact upon the heritage asset
- Residential amenity
- Highways and parking

# RECOMMENDATION

**APPROVAL subject to conditions relating to the following matters:**

1. Time limit
2. Development in accordance with the approved plans
3. Air Source Heat Pump specifications

**Final wording of conditions and any others considered necessary to be delegated to the Assistant Director – Planning**